



ARRAY/FLY BRACKET INSTALLATION

ONE SYTEMS® offers several Array/Fly brackets for use with its loudspeaker systems. These Array/Fly brackets provide an easy and safe method of configuring and suspending simple planar arrays.

There are two basic bracket designs. One is a simple design consisting of two stainless steel brackets that provide a one deep planar array for multiple enclosures. The second Array/Fly bracket is a “T” style design for larger planar arrays and is designed to support increased weight. The “T” bracket is designed for use when additional enclosures are suspended below selected ONE SYSTEMS enclosures using the downfill bracket (DF-IM)

The following ONE SYSTEMS may be mounted using a product specific Array/Fly bracket:

112IM

212IM

212CIM

212Sub-W

115TW

118Sub-W

The FLY-112IM or FLY-112IM-T Array/Fly bracket is used to support 112IM, 212IM, 212CIM and 212Sub-W enclosures in both simple and “T” bracket configurations.

The 115TW or 115TW-T Array/Fly bracket is used to support the 115TW enclosure and the 118SW in both simple and “T” bracket configurations.

WARNING: The FLY-112IM Array/Fly bracket and FLY-115TW Array/Fly brackets are designed to support a single row of the specified loudspeakers only. When the FLY-112IM or FLY-115TW are used additional loudspeakers mounted under the main hang is

not permitted. A additional row of loudspeakers may be mounted under the top row by using the “T” style bracket and the DF-IM down fill bracket only. This bracket is for use with the 212IM, 112IM, and 212CIM only. If an additional row of enclosures is to be suspended below the top enclosures the individual structural ratings of each enclosure and the maximum allowable suspended weight must be strictly observed. Failure to observe these structural ratings may result in personal injury or death!

WARNING: Please read and understand all portions of the “Rigging and Suspension of ONE SYSTEMS Products” article. (www.ONESYSTEMS.COM)

WARNING: All local and national codes must be observed when suspending this product. Consult a professional rigger and structural engineer experienced in suspension of these products. Consult a professional rigger familiar with the appropriate local and national codes.

WARNING: All mating surfaces (i.e. ceilings, structural beams, etc) must be capable of supporting the Array/Fly bracket and loudspeaker weight as well as all additional rigging and provide the associated safety factors as required by local and national codes.

WARNING: Do not substitute the specific Array/Fly bracket. Do not use the specific Array/Fly bracket on any enclosure except for the enclosure specified. Do not suspend the enclosure with any Array/Fly bracket except for the specified Array/Fly bracket.

WARNING: All associated rigging the responsibility of others.

ONE SYSTEMS is not responsible for failures related to non-compliance with local and national codes and safe suspension practice.

INSTALLATION INSTRUCTIONS

FLY-112IM Array/Fly bracket: Simple assembly

Note: This assembly is for arraying two 112IM enclosures, two 212IM enclosures or two 212CIM enclosures. Additional enclosures (of the same type) may be joined using the same procedure. The 112IM Array/Fly bracket is designed to suspend a single row of the specified loudspeakers only. Do not use loudspeaker enclosures of unequal heights. Use only two (or more) 112IM loudspeakers or two, two or more 212CIM loudspeakers or two or more 212IM loudspeakers. Under no circumstances should additional rows of loudspeakers be suspended below the top row!

1. See the product view below.

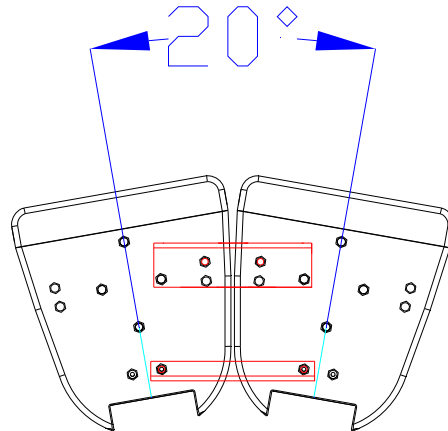
Each Simple Array/Fly bracket kit consists of the following:

- 1 ea. Angled Front bracket
- 1 ea. Angled Rear bracket

- 1 ea. Flat Front bracket
- 1 ea. Flat Rear bracket
- 8 ea. M10 x 40mm stainless steel bolts
- 8 ea. Stainless steel internal tooth lock washers



Front view of 112IM's with Simply Fly bracket

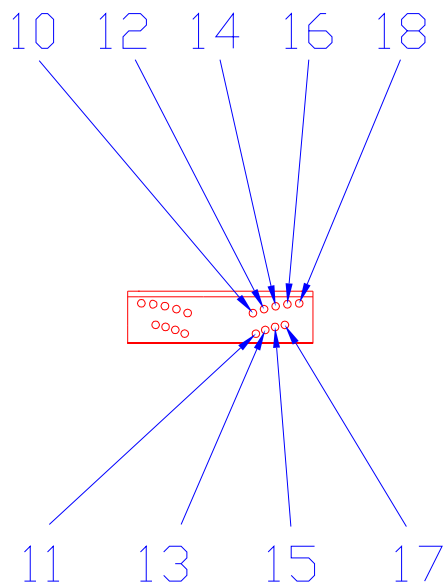
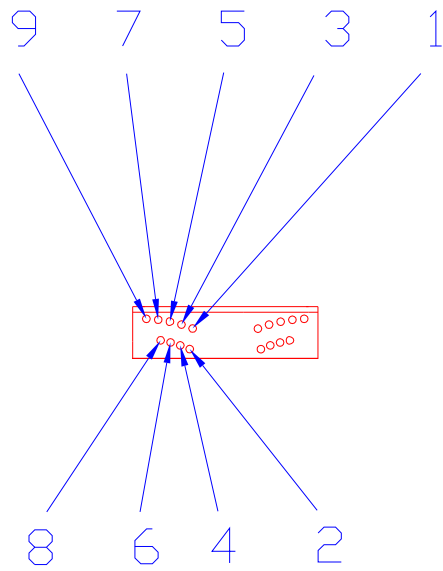


Top view of 112IM's with simple fly brackets

2. Remove the 4 M10 bolts from the positions as shown. Two each are removed from each loudspeaker enclosure (top).
3. Place the enclosures to be connected upright as shown. Connect the angled rear bracket to the M10 mounting locations on the enclosure as shown, using the supplied stainless steel bolts and internal tooth lock washers as shown. Tighten the M10 bolts. Do not substitute any mounting hardware.
4. Connect the angled front bracket, using the appropriate mounting locations to insure the proper aiming angle. Use the supplied stainless steel M10 bolts and internal tooth lock washers as shown. Tighten the M10 bolts. Do not substitute any mounting hardware.

Refer to the Aiming diagram for specific hole locations in the front bracket for aiming. To achieve the specific included angles see the table below: (This table applies to multiple 112IM's, 212IM's and 212CIM's.

Front bracket hole location	Included angle
1, 10	20 degrees
2, 11	25 degrees
3, 12	30 degrees
4, 13	35 degrees
5, 14	40 degrees
6, 15	45 degrees
7, 16	50 degrees
8, 17	55 degrees
9, 18	60 degrees



Mounting locations for front angled bracket FLY-112IM

5. Carefully tilt the two loudspeakers on to their backs (this should be done on a level and hard surface on the ground).
6. Mount the flat rear bracket to the appropriate M10 mounting locations on the bottom of the loudspeaker. Tighten the M10 bolts and insure that the lock washers have been used.
7. Mount the flat front bracket to the appropriate M10 mounting locations on the loudspeaker. Select the proper hole locations to insure the desired splay between the two loudspeakers. Tighten the M10 bolts and insure that the lock washers have been used.



View of flat front and flat rear brackets

8. Carefully tilt the multi enclosure assembly up and into position for suspension. Double check all bolts for proper installation and insure that all bolts have been tightened.

(OR, SEE ALTERNATE METHOD BELOW)

(ALTERNATE METHOD Steps 5a thru 8a may be used in place of steps 5 thru 8 above.)

WARNING: insure that the top bolts and lock washers are secure and tight before lifting off the ground

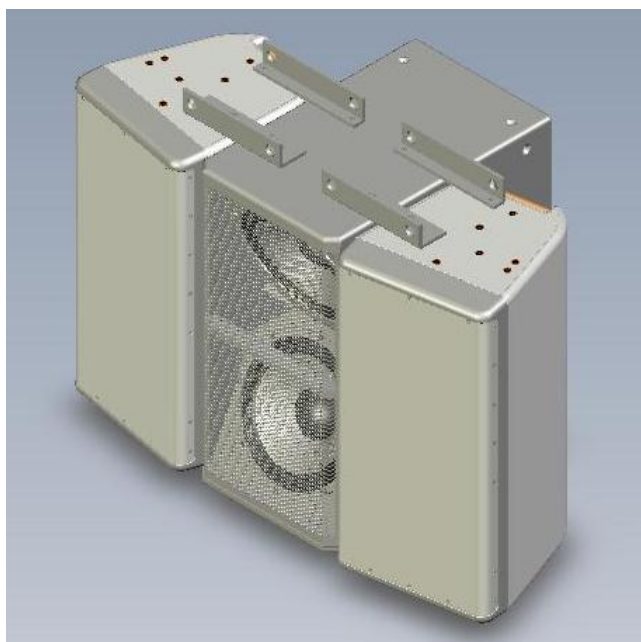
- 5a. Suspend the array to a height that will allow convenient access to the bottom of the loudspeakers.
 - 6a. Mount the flat rear bracket to the appropriate M10 mounting locations on the loudspeaker. Tighten the supplied M10 bolts
 - 7a. Mount the flat front bracket to the appropriate M10 mounting locations on the loudspeaker. Tighten the supplied M10 bolts.
 - 8a. Tighten all bolts on the front and back brackets for both the top and bottom portions of the loudspeaker enclosure
9. Complete the installation using the appropriate associated rigging to insure proper safe working loads.

NOTE: Two 212IM enclosures may be mounted as noted above and below using either the FLY-112IM or FLY-112IM-T. In addition, the DF_IM down fill bracket may be used to suspend a single 112IM below each 212IM enclosure. In this configuration the Fly-DF brackets are used to provide structural control to the bottom portion of the 212IM enclosures. The FLY-112IM cannot be used due to the 90 degree bend in the simple bracket structure. The FLY-DF brackets should be used on the bottom of the 212IM enclosures only.

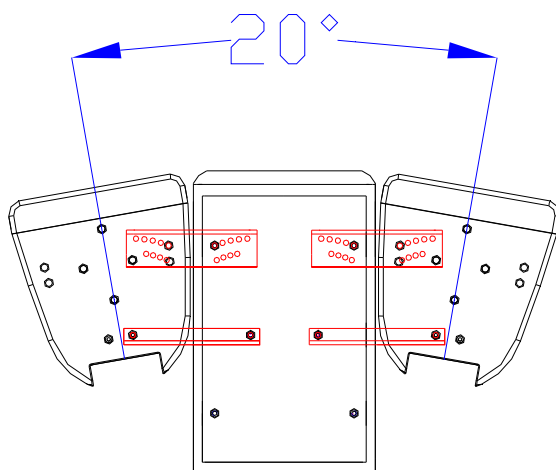
FLY-112IM Array/Fly bracket (simple assembly) with 212SW Subwoofer Added

Note: Two 112IM or 212CIM enclosures may be arrayed with a single 212Sub-W subwoofer mounted between the two flanking loudspeaker enclosures. The 212Sub-W is the same height as the 112IM or the 212CIM so a single 212Sub-W may be mounted between two identical flanking loudspeakers (i.e. two 112IM's or two 212CIM's).

1. Each Simple Array/Fly bracket kit consists of the following:
 - 2 ea. Angled Front brackets
 - 2 ea. Angled Rear brackets
 - 2 ea. Flat Front brackets
 - 2 ea. Flat Rear brackets
 - 16 ea. M10 x 40mm stainless steel bolts
 - 16 ea. Stainless steel internal tooth lock washers



112IM's with 212Sub-W and Simple Fly brackets



Top view of 2 112IM's using FLY-112IM with angled front and angled rear brackets

2. Remove the 4 M10 bolts from the positions as shown (Figure 2). Two each are removed from each loudspeaker enclosure (top).

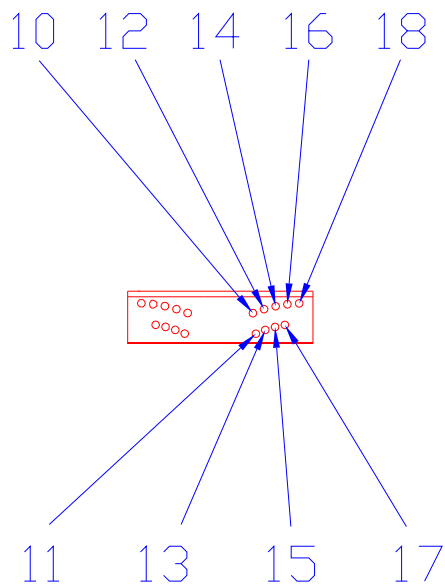
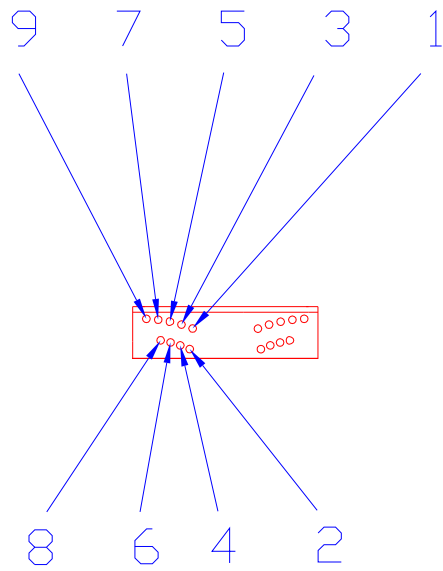
3. Place the enclosures to be connected upright as shown. The first step should be to connect the flanking loudspeaker enclosure (either a 112IM or a 212CIM) to the 212Sub-W subwoofer. Connect the angled rear bracket to the M10 mounting locations on the enclosure as shown, using the supplied stainless steel bolts and internal tooth lock washers as shown. Tighten the M10 bolts. Do not substitute any mounting hardware.

4. Connect the angled front bracket, using the appropriate mounting locations to insure the proper aiming angle. Use the supplied stainless steel M10 bolts and internal tooth lock washers as shown. Tighten the M10 bolts Do not substitute any mounting hardware.

5. The steps in 3 and 4 must be repeated again. The second flanking loudspeaker enclosure should be connected to the other side of the 212Sub-W subwoofer.

Refer to the Aiming diagram for specific hole locations in the front bracket for aiming. This table should be understood as the array is viewed from the top. The 212SW subwoofer will be in the center. Because two simple Array/Fly bracket assemblies are used the table below must refer to both the left flanking and right flanking loudspeaker enclosures. To achieve the specific included angles see the table below:

Front bracket hole location		Included angle
Left Flanking	Right Flanking	
1,1	1,10	20 degrees
2,1	1,11	25 degrees
3,1	1,12	30 degrees
4,1	1,13	35 degrees
5,1	1,14	40 degrees
6,1	1,15	45 degrees
7,1	1,16	50 degrees
8,1	1,17	55 degrees
9,1	1,18	60 degrees

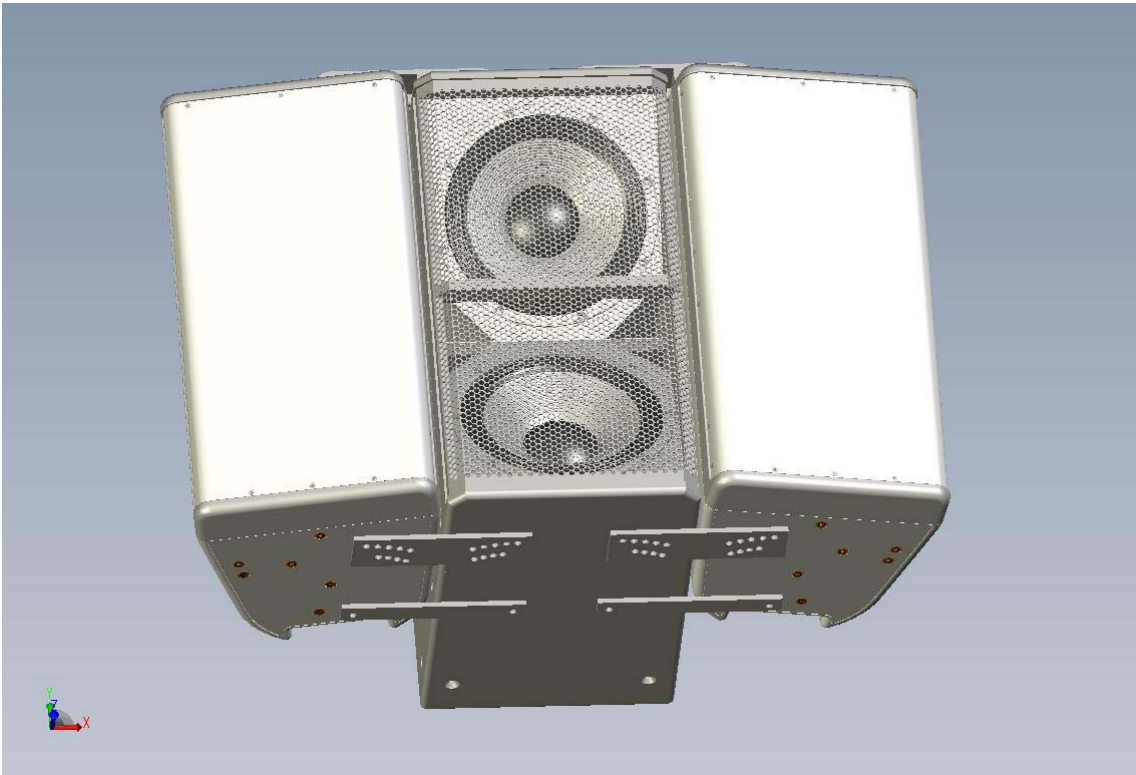


Mounting locations for front angled bracket FLY-112IM

6. Mount the flat rear brackets to the appropriate M10 mounting locations
7. Suspend the array to a height that will allow convenient access to the bottom of the loudspeakers.

WARNING: Insure that the top M10 bolts and lock washers are secure and tightened prior to lifting.

8. Mount the flat rear brackets to the appropriate M10 mounting locations in order to unitize the two flanking loudspeakers to the center 212Sub-W subwoofer. Tighten the supplied M10 bolts
9. Mount the flat front brackets to the appropriate M10 mounting locations in order to unitize the two flanking loudspeakers to the center 212Sub-W subwoofer. Tighten the supplied M10 bolts



Bottom view of flat front and flat rear brackets

10. Tighten all bolts on the front and back brackets for both the top and bottom portions of the loudspeaker enclosure
11. Complete the installation using the appropriate associated rigging to insure proper safe working loads.

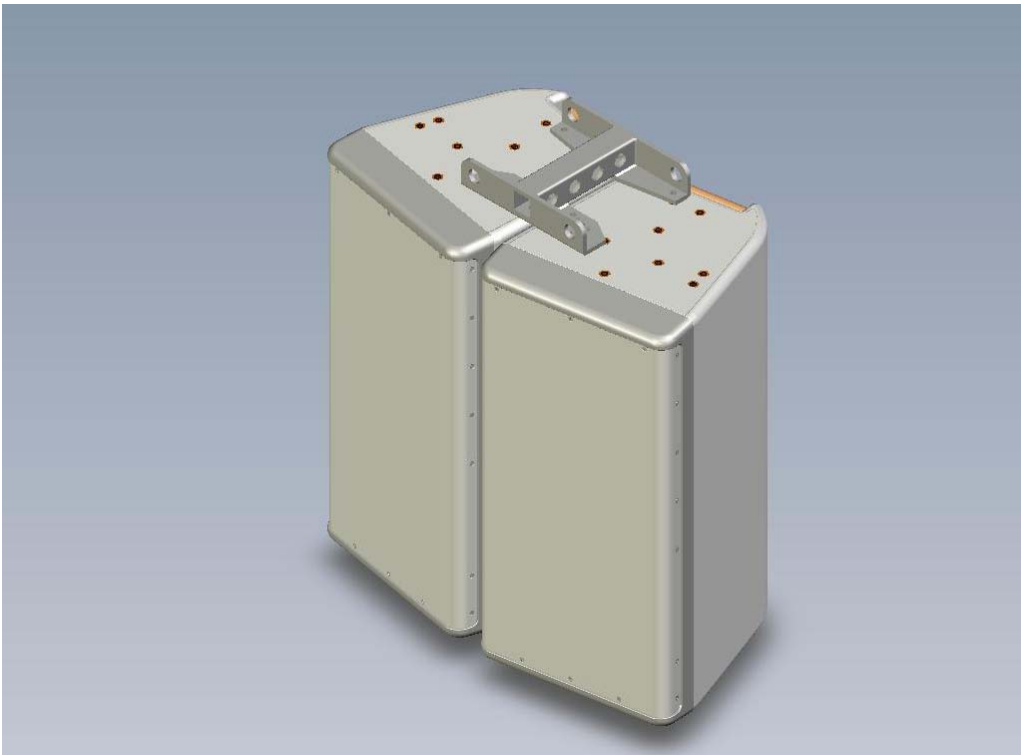
112IM-T Array/Fly bracket: “T” Assembly

Note: This assembly is for arraying two 112IM enclosures, two 212IM enclosures or two 212CIM enclosures. Additional enclosures (of the same type) may be joined using the same procedure. The FLY-112IM Array/Fly bracket is designed to suspend a single row of the specified loudspeakers only. Do not use loudspeaker enclosures of unequal heights. Use only two (or more) 112IM loudspeakers or two, two or more 212CIM loudspeakers or two or more 212IM loudspeakers.

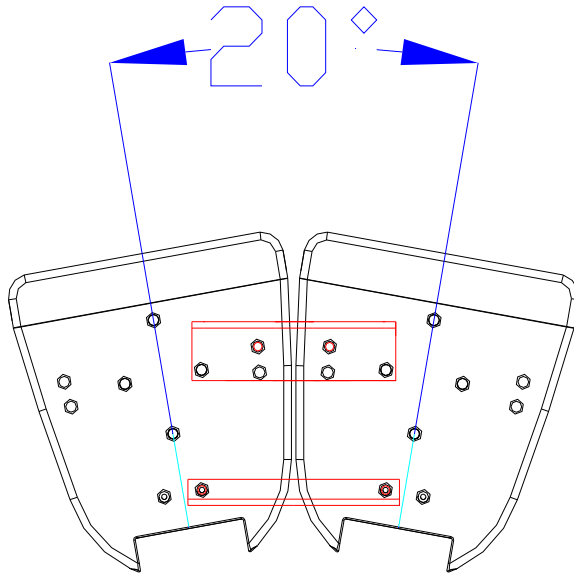
1. See the product view below.

Each “T” Array/Fly bracket kit consists of the following:

- 1 ea. FLY-112IM “T” bracket
- 4 ea. “T” bracket metal spacer/washers
- 1 ea. Flat Front bracket
- 1 ea. Flat Rear bracket
- 8 ea. M10 x 40mm stainless steel bolts
- 8 ea. Stainless steel internal tooth lock washers



Front View of 112IM's with “T” Fly bracket

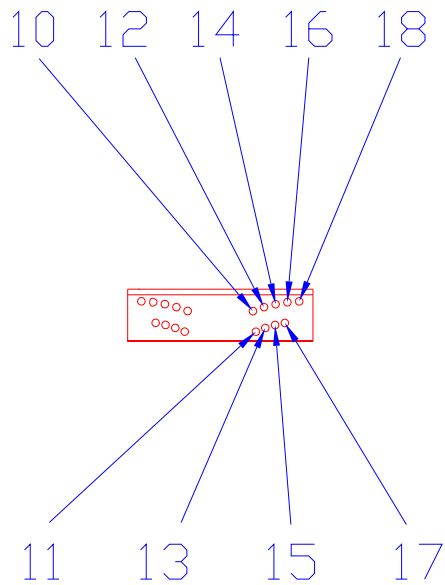
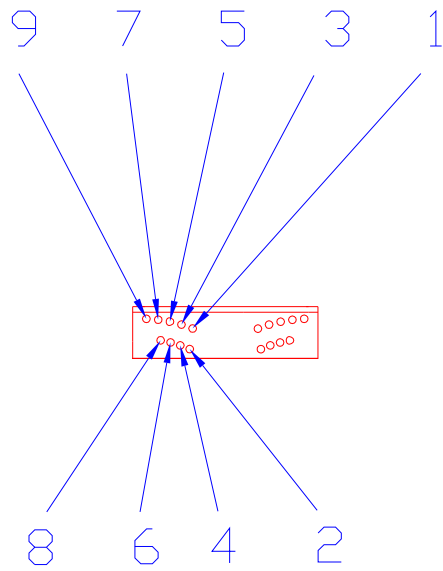


Top view of 2 112IM's with FLY-112IM-T bracket

2. Remove the 4 M10 bolts from the positions as shown (Figure 2). Two each are removed from each loudspeaker enclosure (top).
3. Place the enclosures to be connected upright as shown. Connect the "T" bracket to the M10 mounting locations on the enclosure as shown, using the supplied stainless steel bolts and internal tooth lock washers as shown. The "T" bracket metal spacer/washers must be located, 1 ea., between the "T" bracket and the loudspeaker enclosure. These metal spacer/washers act to level the "T" Array/Fly bracket due to the structural bolts protruding under the "T" Array/Fly bracket assembly. Tighten the M10 bolts. Do not substitute any mounting hardware.

4. Refer to the Aiming diagram for specific hole locations in the front bracket for aiming. To achieve the specific included angles see the table below: (This table applies to multiple 112IM's, 212IM's and 212CIM's.

Front bracket hole location	Included angle
1, 10	20 degrees
2, 11	25 degrees
3, 12	30 degrees
4, 13	35 degrees
5, 14	40 degrees
6, 15	45 degrees
7, 16	50 degrees
8, 17	55 degrees
9, 18	60 degrees



Mounting locations for angled front bracket FLY-112IM

5. Carefully tilt the two loudspeakers on to their backs. This must be done on a flat and level surface on the ground
6. Mount the flat rear bracket to the appropriate M10 mounting locations the loudspeakers insuring that the lock washers have been used. Tighten the bolts
7. Mount the flat front bracket to the appropriate M10 mounting locations on the loudspeakers. Tighten the supplied M10 bolts, insuring that the lock washers have been used. The enclosures may now be tilted back to an upright position



View of flat front and flat rear brackets

8. Check all bolts for proper installation and tighten again.

ALTERNATE METHOD

(steps 5a thru 8a may be substituted for steps 5 thru 8 above)

WARNING: Insure that all M10 bolts are secure and tight prior to lifting the array off the ground)

- 5a. Suspend the array to a height that will allow convenient access to the bottom of the loudspeakers.
- 6a. Mount the flat rear bracket to the appropriate M10 mounting locations on the loudspeakers. Tighten the supplied M10 bolts insuring that the lock washers have been used
- 7a. Mount the flat front bracket to the appropriate M10 mounting locations on the loudspeakers. Tighten the supplied M10 bolts insuring that the lock washers have been used.
- 8a. Tighten all bolts on the front and back brackets for both the top and bottom portions of the loudspeaker enclosure
9. Complete the installation using the appropriate associated rigging to insure proper safe working loads.

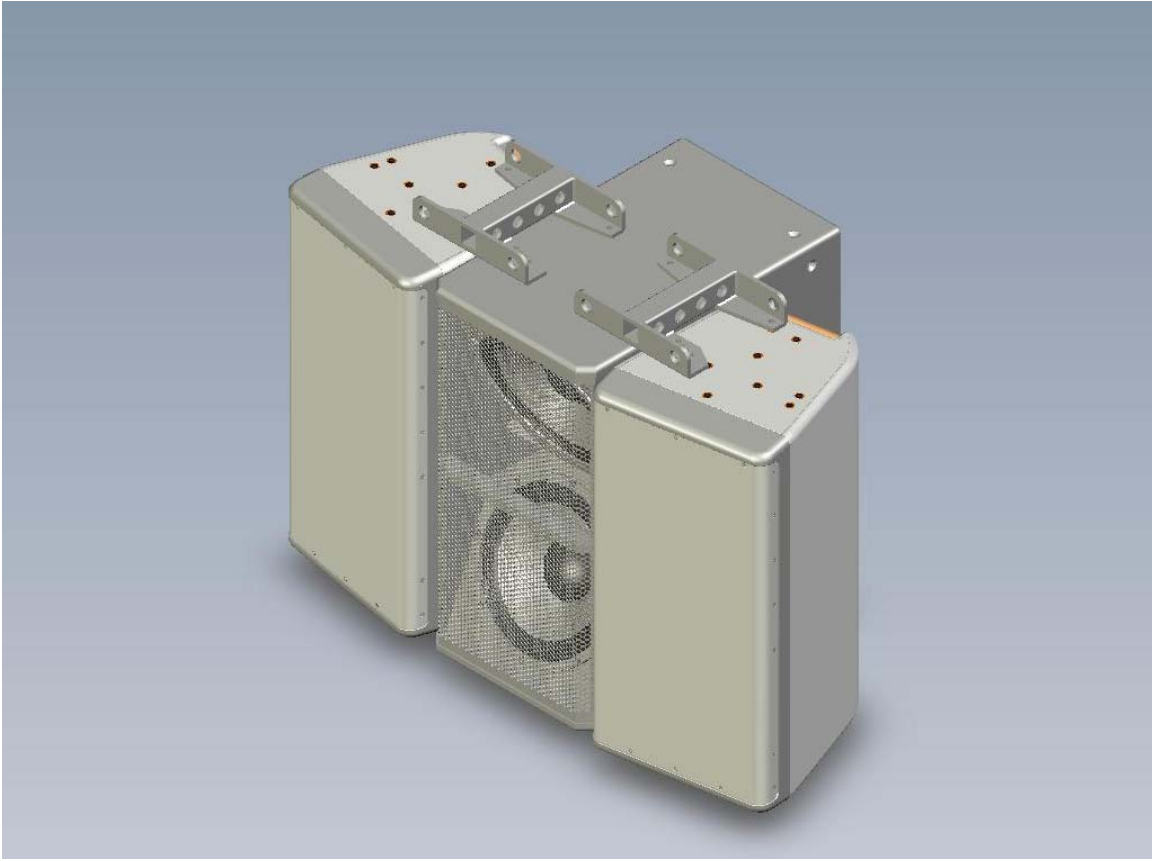
FLY-112IM Array/Fly bracket ('T' assembly) with 212Sub-W Subwoofer Added

Note: Two 112IM or 212CIM enclosures may be arrayed with a single 212Sub-W subwoofer mounted between the two flanking loudspeaker enclosures. The 212Sub-W is the same height as the 112IM or the 212CIM so a single 212Sub-W may be mounted between two identical flanking loudspeakers (i.e. two 112IM's or two 212CIM's).

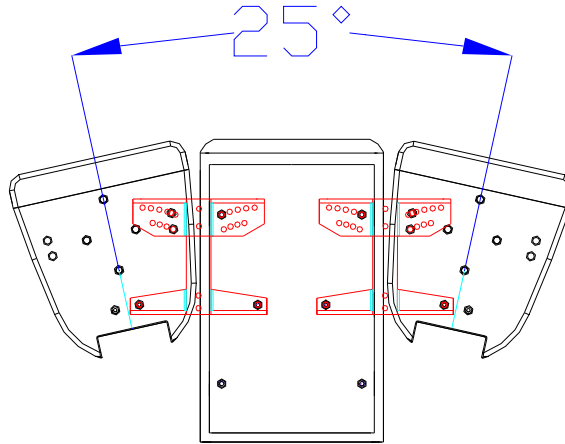
1. See product view below

Each Simple Array/Fly bracket kit consists of the following:

- 2 ea. FLT-112IM Array/Fly "T" bracket
- 8 ea. "T" bracket metal spacer/washers
- 2 ea. Flat Front brackets
- 2 ea. Flat Rear brackets
- 16 ea. M10 x 40mm stainless steel bolts
- 16 ea. Stainless steel internal tooth lock washers



Front View of 112IM's with 212Sub-W and "T" Fly brackets

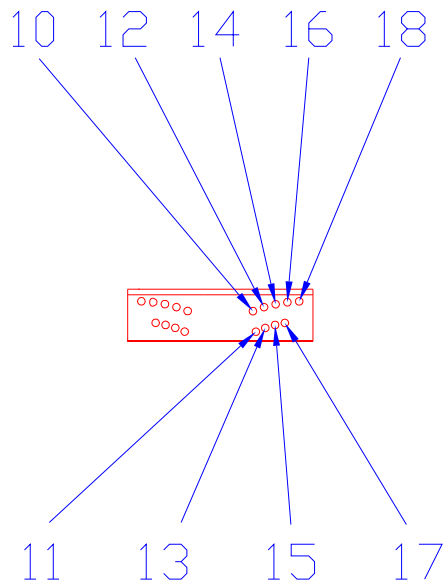
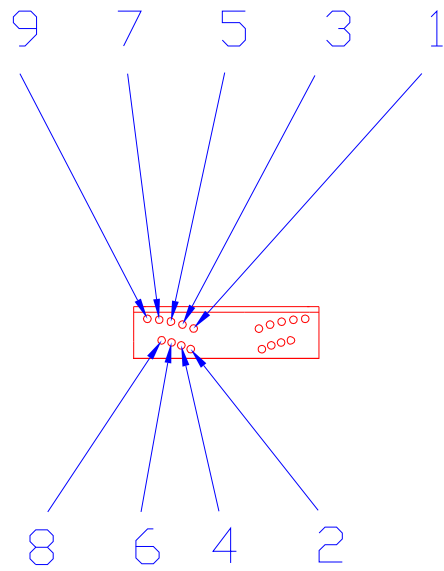


Top view of 2 112IM's and 118Sub-W
with FLY-112IM-T brackets

2. Remove the 4 M10 bolts from the positions as shown (Figure 2). Two each are removed from each loudspeaker enclosure (top).
3. Place the enclosures to be connected upright as shown. The first step should be to connect the flanking loudspeaker enclosure (either a 112IM or a 212CIM) to the 212Sub-W subwoofer. Connect the "T" bracket to the M10 mounting locations on the enclosure as shown, using the supplied stainless steel bolts and internal tooth lock washers as shown. Install the 4 ea. Metal spacer/washers between the loudspeaker enclosure and the "T" bracket. Tighten the M10 bolts. Do not substitute any mounting hardware.
4. The steps in 3 must be repeated again. The second flanking loudspeaker enclosure should be connected to the other side of the 212Sub-W subwoofer.

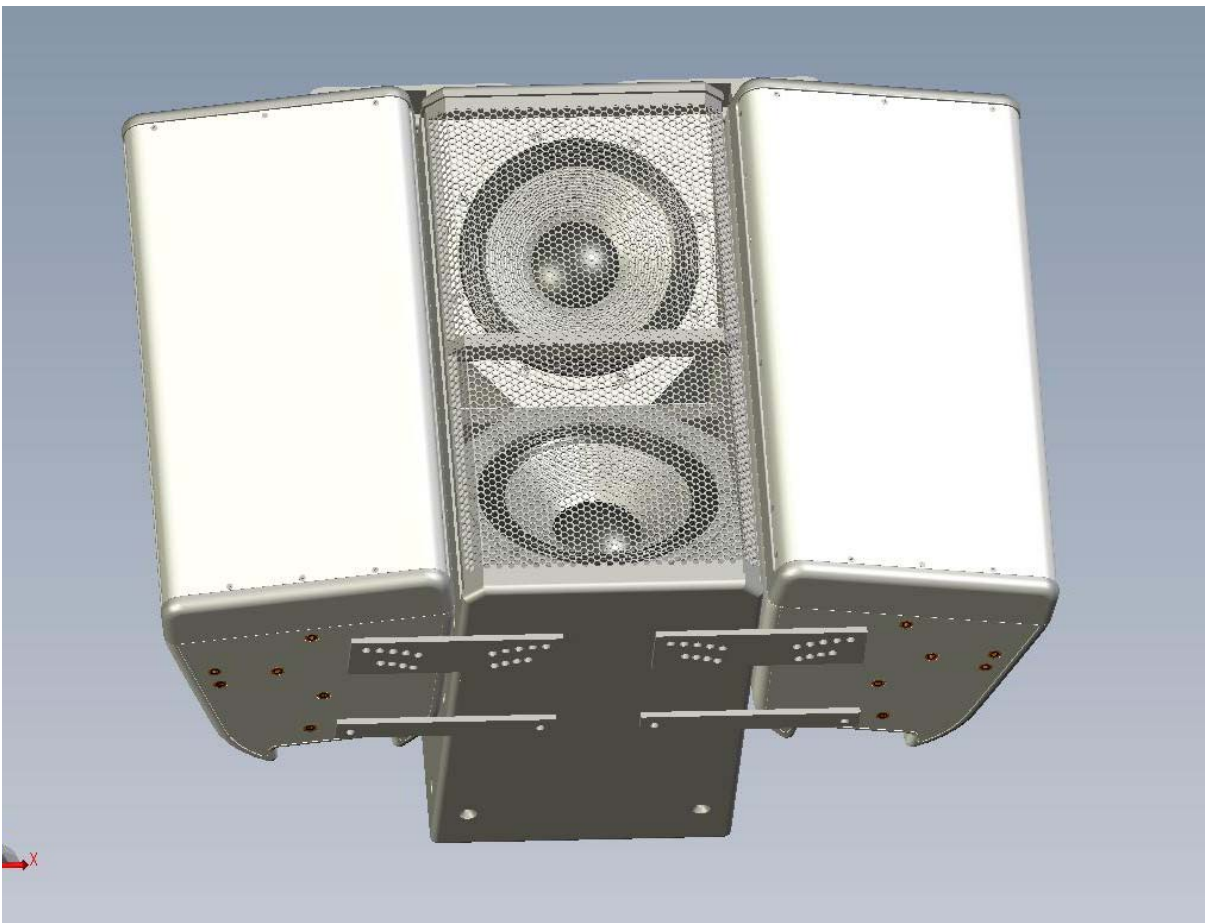
Refer to the Aiming diagram for specific hole locations in the front bracket for aiming. This table should be understood as the array is viewed from the top. The 212SW subwoofer will be in the center. Because two simple Array/Fly bracket assemblies are used the table below must refer to both the left flanking and right flanking loudspeaker enclosures. To achieve the specific included angles see the table below:

Front bracket hole location		Included angle
Left Flanking	Right Flanking	
1,1	1,10	20 degrees
2,1	1,11	25 degrees
3,1	1,12	30 degrees
4,1	1,13	35 degrees
5,1	1,14	40 degrees
6,1	1,15	45 degrees
7,1	1,16	50 degrees
8,1	1,17	55 degrees
9,1	1,18	60 degrees



Mounting locations for angled front bracket FLY-112IM

5. Suspend the array to a height that will allow convenient access to the bottom of the loudspeakers.
6. Mount the flat rear bracket to the appropriate M10 mounting locations in order to unitize the two flanking loudspeakers to the center 212Sub-W subwoofer. Tighten the supplied M10 bolts
7. Mount the flat front bracket to the appropriate M10 mounting locations in order to unitize the two flanking loudspeakers to the center 212Sub-W subwoofer. Tighten the supplied M10 bolts



View of flat front and flat rear brackets

8. Tighten all bolts on the front and back brackets for both the top and bottom portions of the loudspeaker enclosure

9. Complete the installation using the appropriate associated rigging to insure proper safe working loads.

FLY-115TW Array/Fly bracket: Simple Assembly

Note: This assembly is for arraying two 115TW enclosures. Additional enclosures of the same type (115TW) may be joined using the same procedure. The FLY-115TW Array/Fly bracket is designed to suspend a single row of the specified loudspeakers only. Do not use loudspeaker enclosures or unequal heights. Under no circumstances should additional rows of loudspeakers be suspended below the top row.

WARNING: Do not suspend any other loudspeakers or objects from the 115TW loudspeakers or brackets.

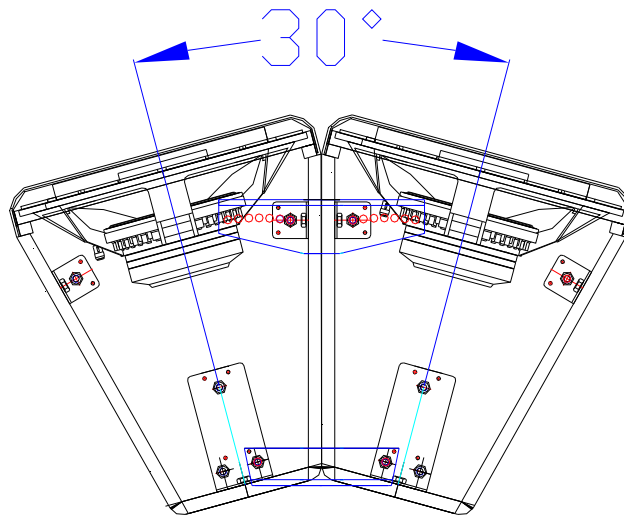
1. See the product view below.

Each Simple Array/Fly bracket kit consists of the following:

- 1 ea. Angled Front bracket
- 1 ea. Angled Rear bracket
- 1 ea. Flat Front bracket
- 1 ea. Flat Rear bracket
- 8 ea. M10 x 40mm stainless steel bolts
- 8 ea. Stainless steel internal tooth lock washers



115TW's with Simple Fly bracket

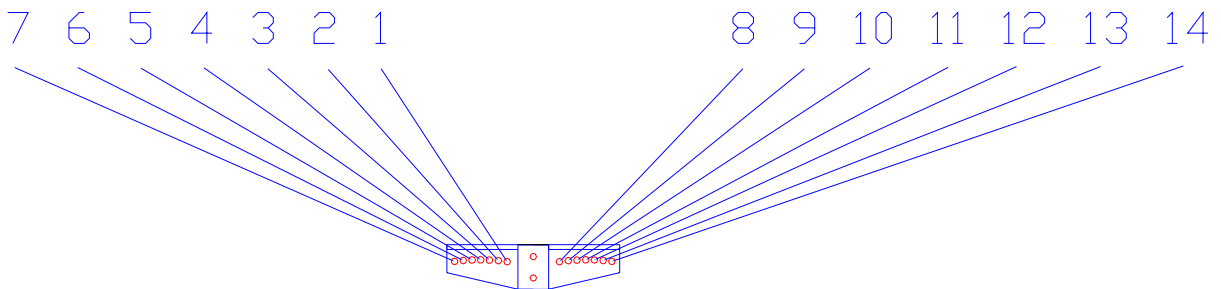


Top view of 2 115TW's with angled front and angled rear brackets

2. Remove the 4 M10 bolts from the positions as shown (Figure 2). Two each are removed from each loudspeaker enclosure (top).
3. Place the enclosures to be connected upright as shown. Connect the angled rear bracket to the M10 mounting locations on the enclosure as shown, using the supplied stainless steel bolts and internal tooth lock washers, as shown. Tighten the bolts. Do not substitute mounting hardware.
4. Connect the angled front bracket using the appropriate mounting locations to insure the proper aiming angle. Use the supplied stainless steel M10 bolts and internal tooth lock washers as shown. Tighten the M10 bolts.

Refer to the Aiming diagram for specific hole locations in the front bracket for aiming. To achieve the specific included angles see the table below: (This table applies to multiple 115TW loudspeaker enclosures)

Front bracket hole location	Included angle
1, 8	30 degrees
2, 9	35 degrees
3, 10	40 degrees
4, 11	45 degrees
5, 12	50 degrees
6, 13	55 degrees
7, 14	60 degrees



Mounting locations for angled front bracket FLY-115TW

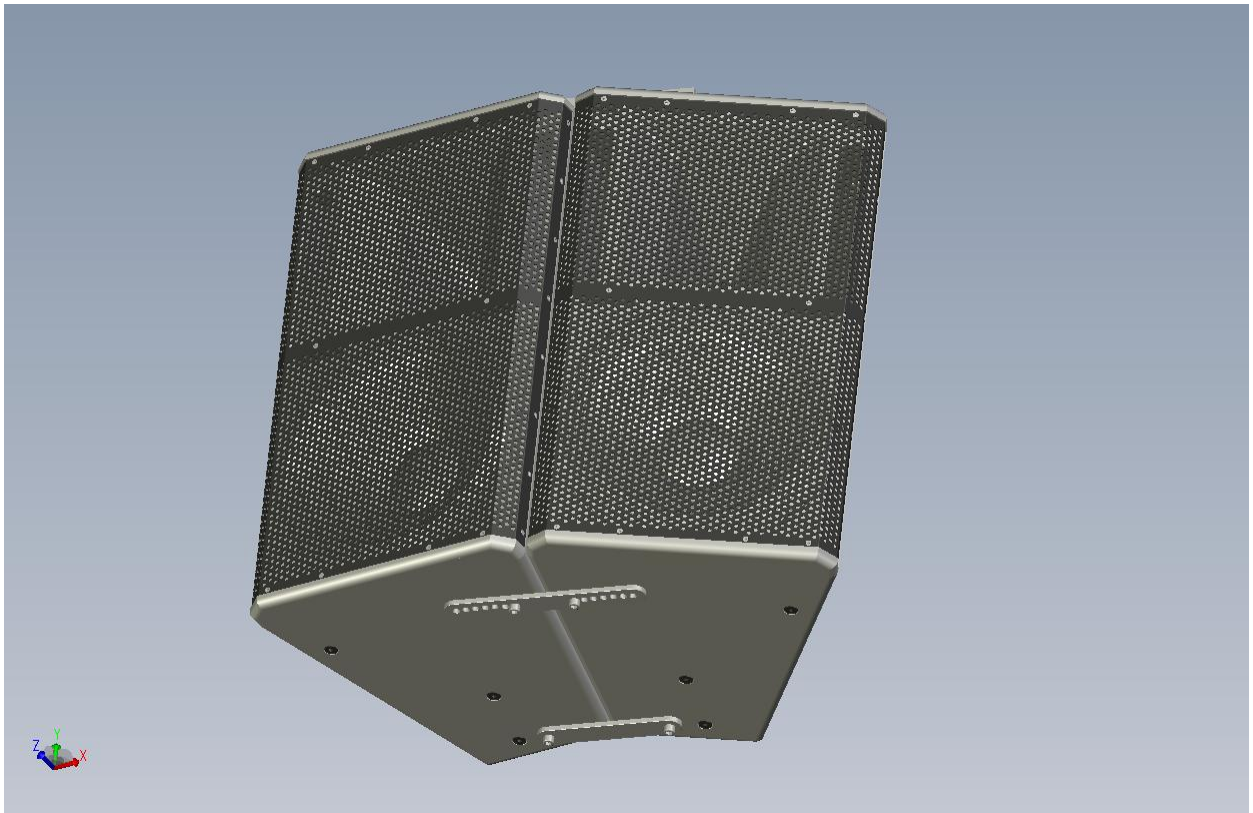
- Carefully tilt the two loudspeakers on to their backs (this should be done on a level and hard surface on the ground) .
- Mount the flat rear bracket to the appropriate M10 mounting locations on the bottom of the loudspeaker. Tighten the M10 bolts and insure that the lock washers have been used.
- Mount the flat front bracket to the appropriate M10 mounting locations on the loudspeaker. Select the proper hole locations to insure the desired splay between the two loudspeakers. Tighten the M10 bolts and insure that the lock washers have been used.

8. Carefully tilt the multi enclosure assembly up and into position for suspension. Double check all bolts for proper installation and insure that all bolts have been tightened.

(ALTERNATE METHOD. Steps 5a thru 8a may be used in place of steps 5 thru 8 above.)

WARNING: insure that the top bolts and lock washers are secure and tight before lifting off the ground

- 5a. Suspend the array to a height that will allow convenient access to the bottom of the loudspeakers.
- 6a. Mount the flat rear bracket to the appropriate M10 mounting locations on the loudspeaker. Tighten the supplied M10 bolts
- 7a. Mount the flat front bracket to the appropriate M10 mounting locations on the loudspeaker. Tighten the supplied M10 bolts.



Bottom view of 2 115TW's with flat front and flat rear brackets

- 8a. Tighten all bolts on the front and back brackets for both the top and bottom portions of the loudspeaker enclosure
9. Complete the installation using the appropriate associated rigging to insure proper safe working loads.

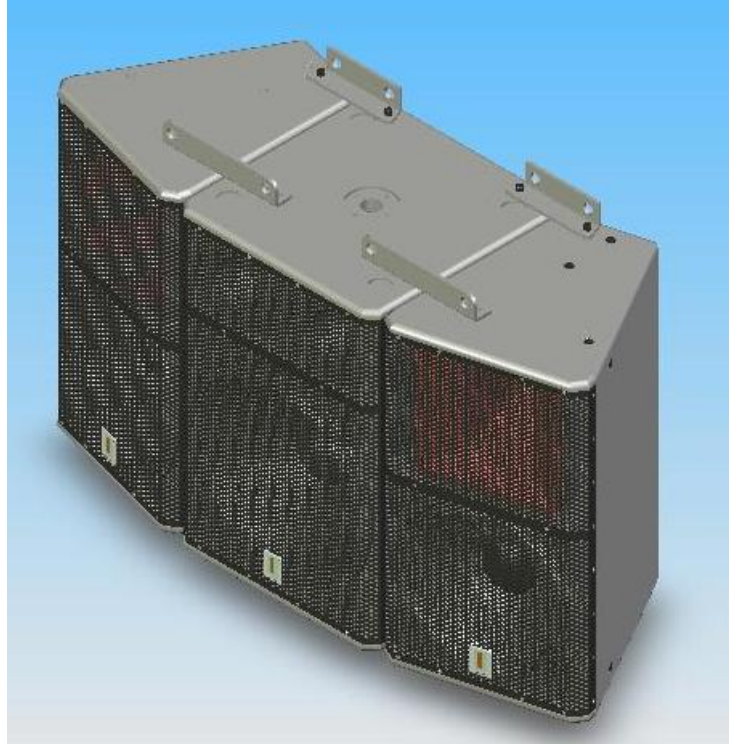
FLY-115TW Array/Fly bracket (simple assembly) with 118Sub-W Subwoofer Added

Note: Two 115TW enclosures may be arrayed with a single 118Sub-W subwoofer mounted between the two flanking loudspeaker enclosures. The 118Sub-W is the same height as the 115TW so a single 118Sub-W may be mounted between two identical flanking loudspeakers.

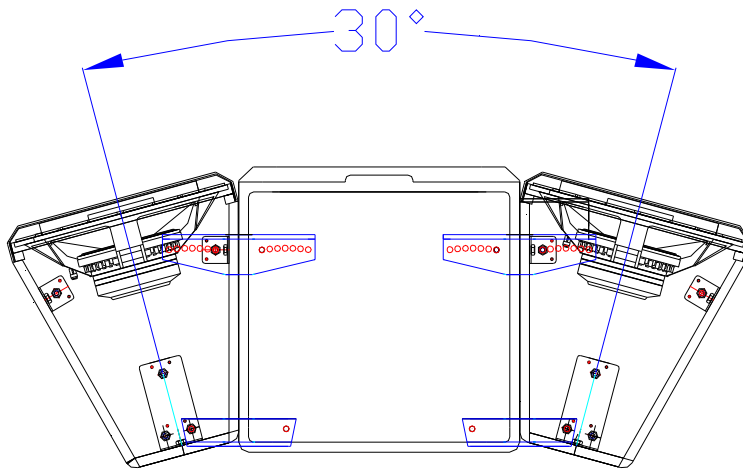
1. See product view below,

Each Simple Array/Fly bracket kit consists of the following:

- 2 ea. Angled Front brackets
- 2 ea. Angled Rear brackets
- 2 ea. Flat Front brackets
- 2 ea. Flat Rear brackets
- 16 ea. M10 x 40mm stainless steel bolts
- 16 ea. Stainless steel internal tooth lock washers



115TW's and 118Sub-W with Simple Fly bracket

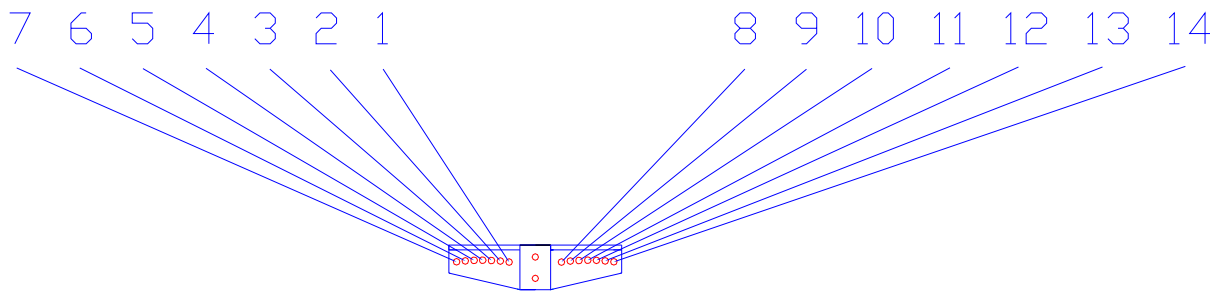


Top view of 115TW's and 119Sub-W with angled front and angled rear brackets

2. Remove the 4 M10 bolts from the positions as shown (Figure 2). Two each are removed from each loudspeaker enclosure (top).
3. Place the enclosures to be connected upright as shown. The first step should be to connect the flanking loudspeaker enclosure (a 115TW) to the 118Sub-W subwoofer. Connect the angled rear bracket to the M10 mounting locations on the enclosure as shown, using the supplied stainless steel bolts and internal tooth lock washers as shown. Tighten the M10 bolts. Do not substitute any mounting hardware.
4. Connect the angled front bracket, using the appropriate mounting locations to insure the proper aiming angle. Use the supplied stainless steel M10 bolts and internal tooth lock washers as shown. Tighten the M10 bolts Do not substitute any mounting hardware.
5. The steps in 3 and 4 must be repeated again. The second flanking loudspeaker enclosure should be connected to the other side of the 118Sub-W subwoofer.

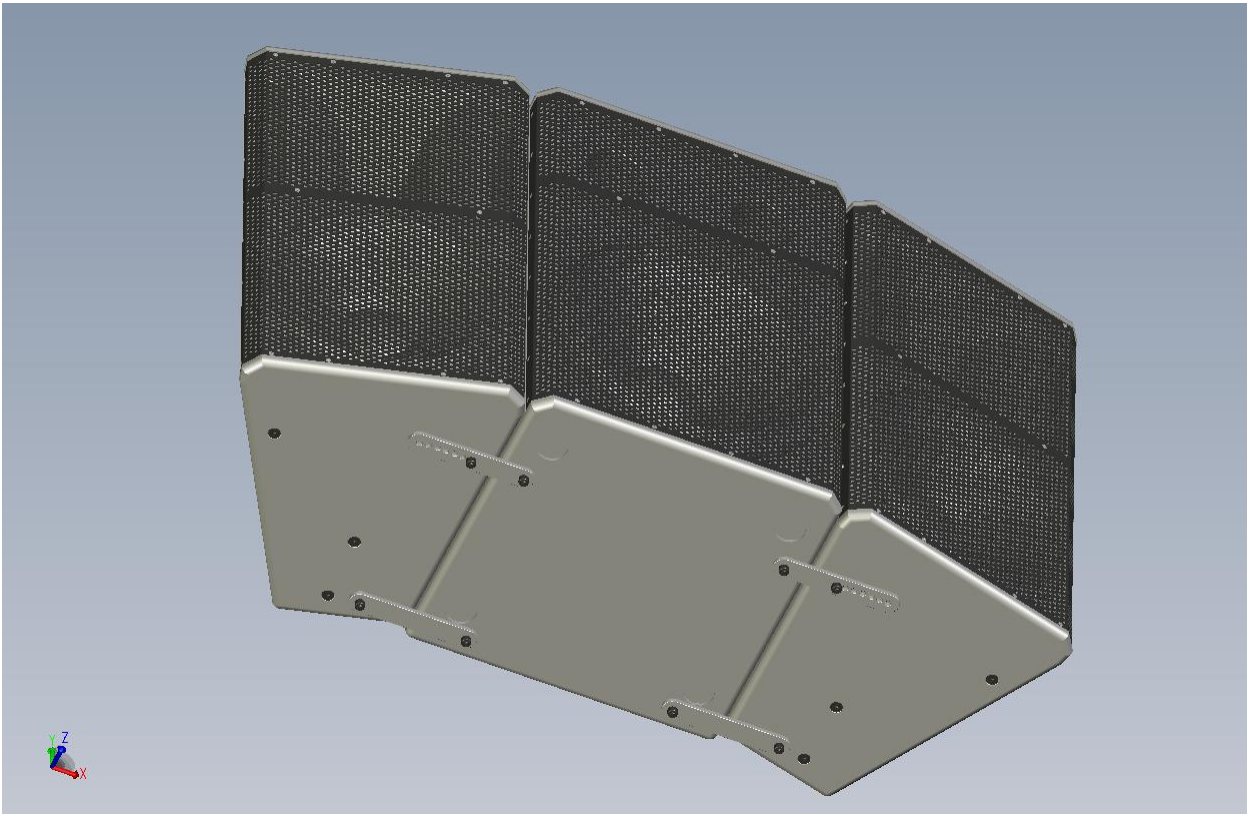
Refer to the Aiming diagram for specific hole locations in the front bracket for aiming. This table should be understood as the array is viewed from the top. The 118Sub-W subwoofer will be in the center. Because two simple Array/Fly bracket assemblies are used the table below must refer to both the left flanking and right flanking loudspeaker enclosures. To achieve the specific included angles see the table below:

Front bracket hole location		Included angle
Left Flanking	Right Flanking	
1,1	1,8	30 degrees
2,1	1,9	35 degrees
3,1	1,10	40 degrees
4,1	1,11	45 degrees
5,1	1,12	50 degrees
6,1	1, 13	55 degrees
7,1	1,14	60 degrees



Mounting locations for Angled front bracket FLY-115TW

6. Suspend the array to a height that will allow convenient access to the bottom of the loudspeakers.



Bottom view of 2 115TW's and 118Sub-W with flat front and flat rear brackets

7. Mount the flat rear brackets to the appropriate M10 mounting locations in order to unitize the two flanking loudspeakers to the center 118SW subwoofer. Tighten the supplied M10 bolts
8. Mount the flat front brackets to the appropriate M10 mounting locations in order to unitize the two flanking loudspeakers to the center 118Sub-W subwoofer. Tighten the supplied M10 bolts
9. Tighten all bolts on the front and back brackets for both the top and bottom portions of the loudspeaker enclosure
10. Complete the installation using the appropriate associated rigging to insure proper safe working loads.

FLY-115TW-T Array/Fly bracket: “T” Assembly

Note: This assembly is for arraying two 115TW enclosures. Additional enclosures (of the same type) may be joined using the same procedure. The FLY-115TW-T Array/Fly bracket is designed to suspend a single row of the specified loudspeakers only. Do not use loudspeaker enclosures of unequal heights. Use only two (or more) 115TW loudspeakers.

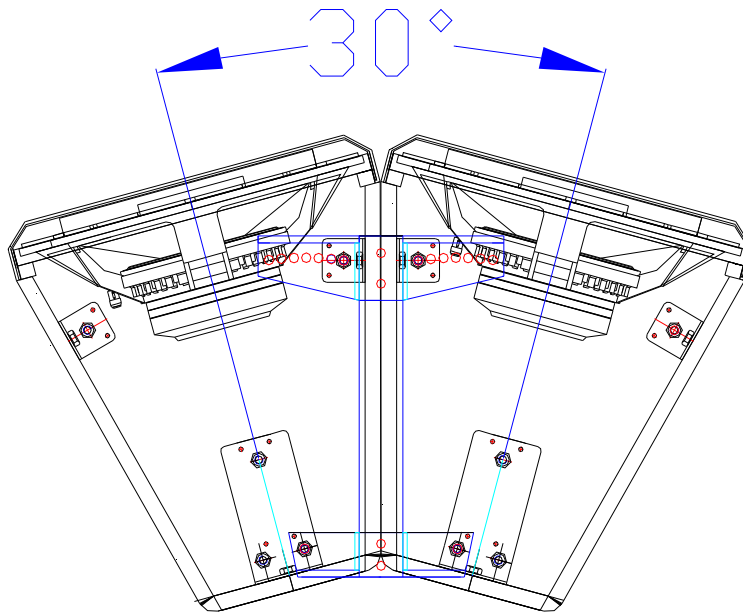
1. See the product view below. Figure 1

Each “T” Array/Fly bracket kit consists of the following:

- 1 ea. FLY-115TW-T bracket
- 4 ea. “T” bracket metal spacer/washers
- 1 ea. Flat Front brackets
- 1 ea. Flat Rear brackets
- 8 ea. M10 x 40mm stainless steel bolts
- 8 ea. Stainless steel internal tooth lock washers



Front view of 115TW's with "T" bracket



Top view of 115TW's with FLY-115TW-T

2. Remove the 4 M10 bolts from the positions as shown (Figure 2). Two each are removed from each loudspeaker enclosure (top).
3. Place the enclosures to be connected upright as shown. Connect the "T" bracket to the M10 mounting locations on the enclosure as shown, using the supplied stainless steel bolts and internal tooth lock washers as shown. The "T" bracket metal spacer/washers must be located, 1 ea., between the "T" bracket and the loudspeaker enclosure. These metal spacer/washers act to level the "T" Array/Fly bracket due to the structural bolts protruding under the "T" Array/Fly bracket assembly. Tighten the M10 bolts. Do not substitute any mounting hardware.
4. Refer to the Aiming diagram for specific hole locations in the front bracket for aiming. To achieve the specific included angles see the table below: (This table applies to multiple 115TW's).

Front bracket hole location

Included angle

1, 8

30 degrees

2, 9

35 degrees

3, 10

40 degrees

4, 11

45 degrees

5, 12

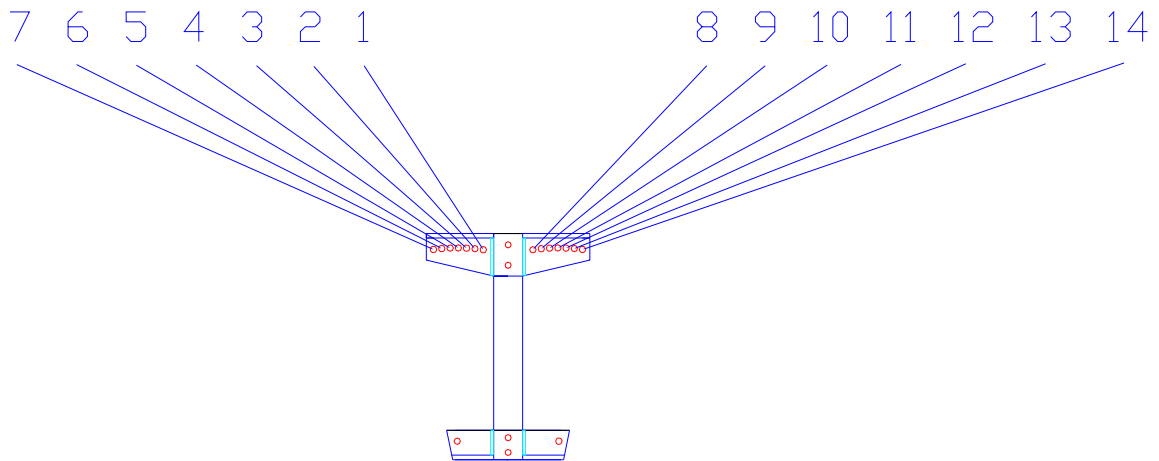
50 degrees

6, 13

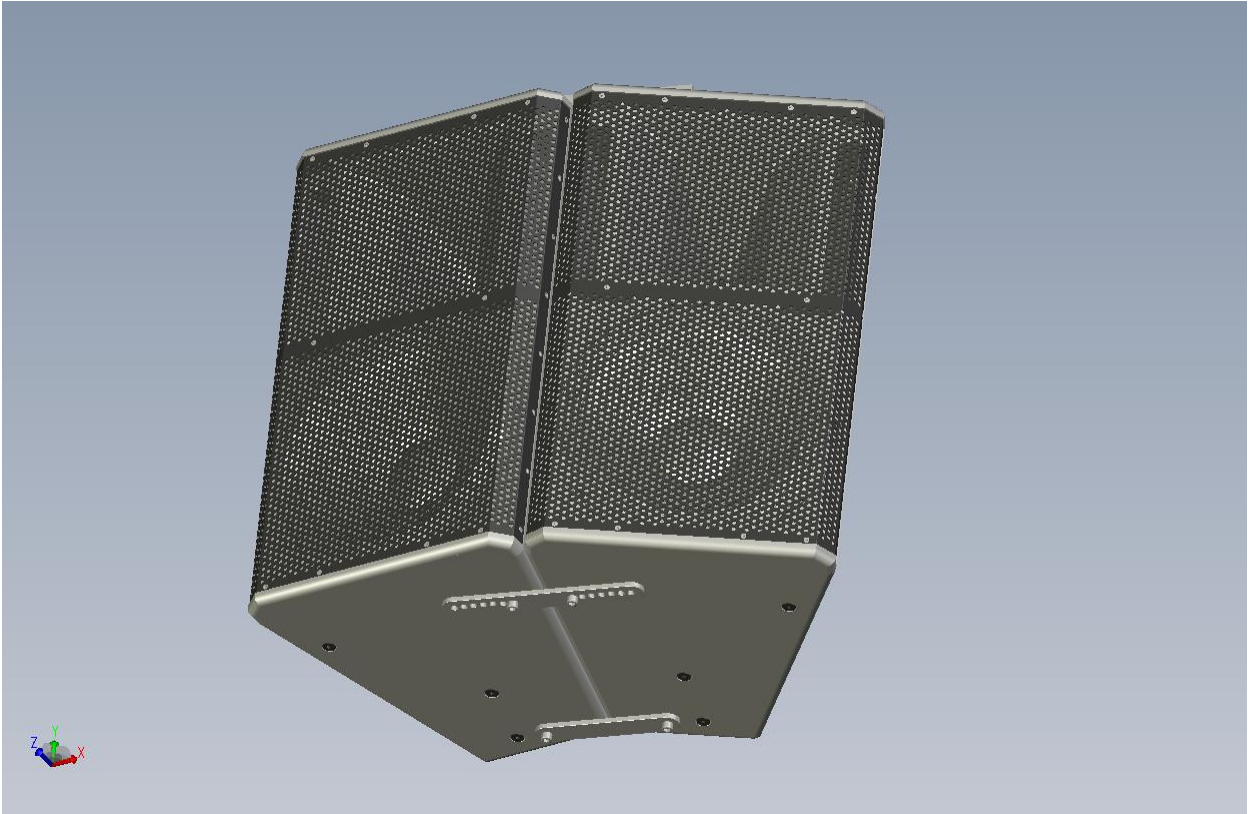
55 degrees

7, 14

60 degrees



Mounting locations for FLY-115TW-T



Bottom view of flat front and flat rear brackets

5. Carefully tilt the loudspeakers on to their backs. This must be done on a flat and level surface on the ground
6. Mount the flat rear bracket to the appropriate M10 mounting locations on the loudspeakers. Tighten the M10 bolts and insure that the lock washers are in place.
7. Mount the flat front bracket to the appropriate M10 mounting locations, insuring that the proper mounting holes have been selected to insure the correct splay angle of the loudspeakers. Tighten the M10 bolts and insure that the lock washers are in place.
8. Carefully tilt the enclosures back to an upright position and insure that all bolts are secure and tight.

(ALTERNATE METHOD. Steps 5a thru 8a may be used in place of steps 5 thru 8 above.)

WARNING: insure that the top bolts and lock washers are secure and tight before lifting off the ground

- 5a. Suspend the array to a height that will allow convenient access to the bottom of the loudspeakers.
 - 6a. Mount the flat rear bracket to the appropriate M10 mounting locations on the loudspeakers. Tighten the supplied M10 bolts insuring the lock washers are in place.
 - 7a. Mount the flat front bracket to the appropriate M10 mounting locations on the loudspeaker. Tighten the supplied M10 bolts
 - 8a. Tighten all bolts on the front and back brackets for both the top and bottom portions of the loudspeaker enclosure
-
9. Complete the installation using the appropriate associated rigging to insure proper safe working loads.

FLY-115TW-T Array/Fly bracket ('T' assembly) with 118Sub-W Subwoofer Added

Note: Two 115TW enclosures may be arrayed with a single 118Sub-W subwoofer mounted between the two flanking loudspeaker enclosures. The 118Sub-W is the same height as the 115TW so a single 118Sub-W may be mounted between two identical flanking loudspeakers (i.e. two 115TW's).

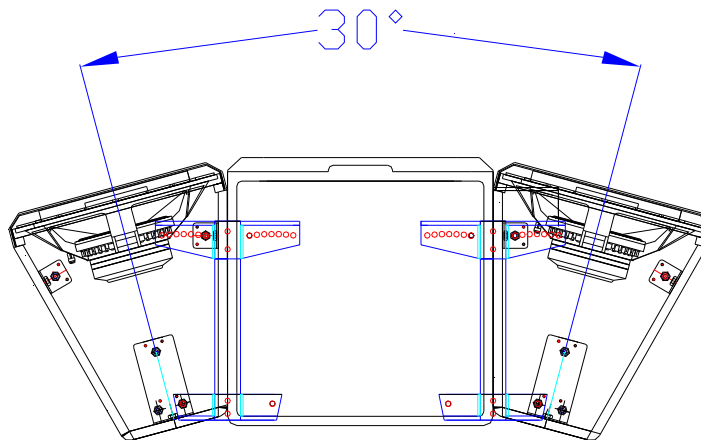
1. See product view below

Each Simple Array/Fly bracket kit consists of the following:

- 2 ea. FLY-115TW-T Array/Fly “T” bracket
- 8 ea. “T” bracket metal spacer/washers
- 2 ea. Flat Front brackets
- 2 ea. Flat Rear brackets
- 16 ea. M10 x 40mm stainless steel bolts
- 16 ea. Stainless steel internal tooth lock washers



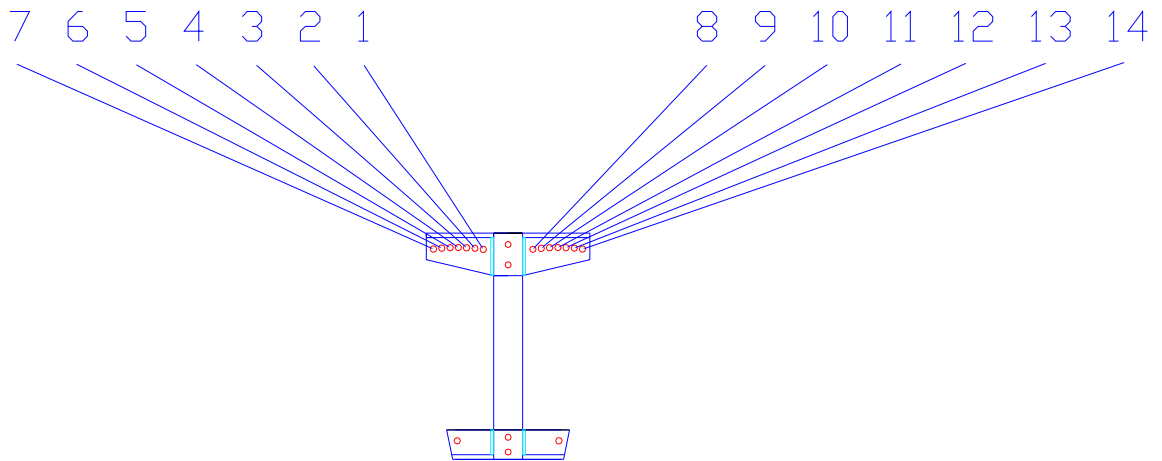
Front view of 115TW's and 118Sub-W with “T” brackets



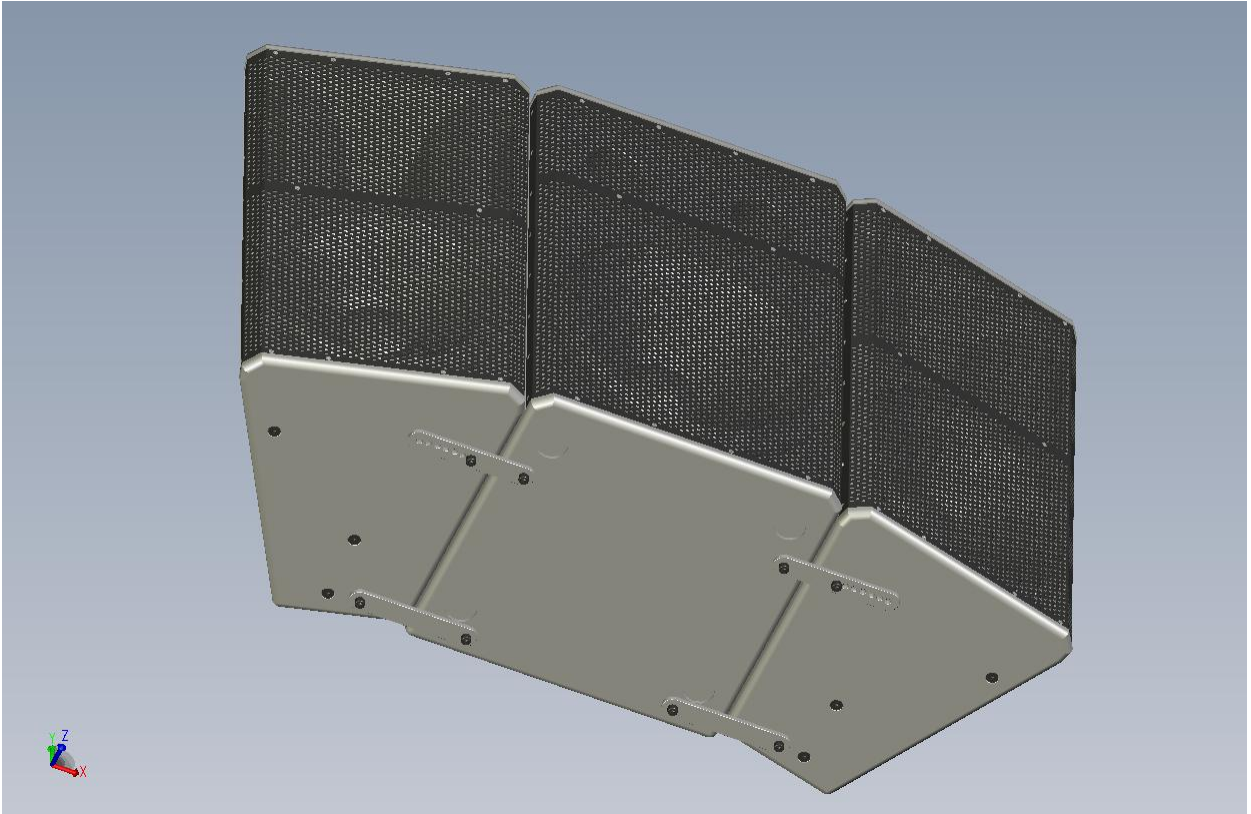
Top view of 2 115TW's and 118Sub-W with FLY-115TW-T

2. Remove the 4 M10 bolts from the positions as shown (Figure 2). Two each are removed from each loudspeaker enclosure (top).
3. Place the enclosures to be connected upright as shown. The first step should be to connect the flanking loudspeaker enclosure (a 115TW) to the 118Sub-W subwoofer. Connect the "T" bracket to the M10 mounting locations on the enclosure as shown, using the supplied stainless steel bolts and internal tooth lock washers as shown. Install the 4 ea. Metal spacer/washers between the loudspeaker enclosure and the "T" bracket. Tighten the M10 bolts. Do not substitute any mounting hardware.
4. The steps in 3 must be repeated again. The second flanking loudspeaker enclosure should be connected to the other side of the 118Sub-W subwoofer.
5. Refer to the Aiming diagram for specific hole locations in the front bracket for aiming. This table should be understood as the array is viewed from the top. The 118Sub-W subwoofer will be in the center. Because two simple Array/Fly bracket assemblies are used the table below must refer to both the left flanking and right flanking loudspeaker enclosures. To achieve the specific included angles see the table below:

Front bracket hole location		Included angle
Left Flanking	Right Flanking	
1,8	1,8	30 degrees
2,9	2,9	35 degrees
3,10	3,10	40 degrees
4,11	4, 11	45 degrees
5,12	5,12	50 degrees
6,13	6,13	55 degrees
7,14	7, 14	60 degrees



Mounting locations for FLY-115TW-T



Bottom view of 2 115TW's and 118Sub-W
with flat front and flat rear brackets

6. Suspend the array to a height that will allow convenient access to the bottom of the loudspeakers.
7. Mount the flat rear bracket to the appropriate M10 mounting locations in order to unitize the two flanking loudspeakers to the center 118SW subwoofer. Tighten the supplied M10 bolts
8. Mount the flat front bracket to the appropriate M10 mounting locations in order to unitize the two flanking loudspeakers to the center 118Sub-W subwoofer. Tighten the supplied M10 bolts
9. Tighten all bolts on the front and back brackets for both the top and bottom portions of the loudspeaker enclosure
10. Complete the installation using the appropriate associated rigging to insure proper safe working loads.



ONE SYSTEMS®

One Systems USA, Inc. * 6204 Gardendale Dr. * Nashville, TN 37215

One Systems Group Co. Ltd. * European Division * Mittelsmoorer Strasse 12 * 28879 Grassberg German

One Systems Global Co., Ltd. * 87/114 Modern Town 15th Floor * Sukhumvit 63, Ekkamai Soi 3, Klongtoey, Bangkok, 1010 Thailand